



股票代码:002881

全球领先的物联网终端及无线数据方案提供商

美格机密
MeiG Confidential
LM756

美格智能技术股份有限公司
MEIG SMART TECHNOLOGY CO.,LTD

地址: 中国·上海市·徐汇区钦江路88号西座三楼
电话: 86-21-54278676 传真: 86-21-54278679
邮箱: m2msales@meigsmart.com 网址: www.meigsmart.com



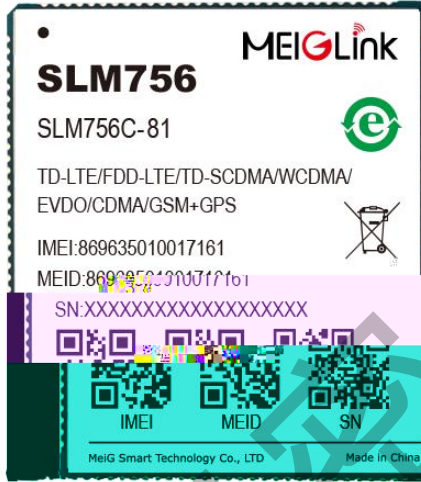
扫一扫, 微信关注美格智能

—

—

—

—



		(&&
		())
		& (
		&
)) ((&
) & & &)
		&((())& () () & (
		&(())& & (
		&() & (
		(&(&((
		&&)
) &
) && (
) &
) &&

		(
		(& &
		& ((
		&
		(&
		&
		p
)
		& &
		& (())
		(()
		()
		(() (
		& (
)
)
		&
		&))
		&
		&

		& & &
--	--	-------------

pin#	pin name	Pad characteristics	Functional description
1	MIPI_DSI0_LANE3_N	AI, AO	

51	VBUS	PI	USB VBUS Voltage
52	KYPD_PWR_N	DI	Power on key
53	GND	GND	GND
54	RF_WIFI/BT	AI,AO	RF signal
55	GND	GND	GND
56	GND	GND	GND
57	PM_RESIN_N	DI	PMIC reset
58	GPIO7_I2C_SCL	DO;B-PD:nppukp	Configurable I/O I2C or GPIO
59	GPIO6_I2C_SDA	DO;B-PD:nppukp	Configurable I/O I2C or GPIO
60	GND	GND	GND
61	RF_GPS	AI	RF signal-GPS ANT
62	GND	GND	GND
63	RF_FM	AI	RF signal-FM ANT
64	GND	GND	GND
65	RF_DIV	AI	RF signal-DIV ANT
66	GND	GND	GND
67	PM8909_MPP4	AO-Z;DI	Configurable MPP; used for ADC IN
68	VCOIN	PI	VCOIN
69	GPIO17	B-PD:nppukp	Configurable I/O,

87	GND	GND	GND
88	UIM1_DET_N	DI,B-PD:nppukp	Configurable I/O UIM1 removal detection
89	GPIO3	B-PD:nppukp	Configurable I/O
90	GPIO2	B-PD:nppukp	Configurable I/O
91	GPIO1	B-PD:nppukp	Configurable I/O
92	GPIO0	B-PD:nppukp	Configurable I/O
93	GND	GND	GND
94	VREG_L11_SDC	PO	PMIC output 2.95V
95	SDC2_SDCARD_DET		

122	MIPI_DSI0_LANE0_P	AI, AO	MIPI display serial interface 0 lane 0 –positive
123	MIPI_DSI0_LANE1_N	AI, AO	MIPI display serial interface 0 lane 1 –negative
124	MIPI_DSI0_LANE1_P	AI, AO	MIPI display serial interface 0 lane 1 –positive
125	MIPI_DSI0_LANE2_N	AI, AO	MIPI display serial interface 0 lane 2 –negative
126	MIPI_DSI0_LANE2_P	AI, AO	MIPI display serial interface 0 lane 2 –positive
127	GPIO36	B-PD:nppukp	Configurable I/O
128	GPIO90_KEY_VOL_UP	DI;B-PD:nppukp	Configurable I/O Keypad sense bit 0
129	GPIO98	B-PD:nppukp	Configurable I/O
130	GPIO95	B-PD:nppukp	Configurable I/O

4.1 绝对最大值

4.1

	-25	-	75	
	-40	-	90	

4.3 工作电压

4.3

V _{BAT}	3.4		4.2	V
V _{BUS}	4	5	6	V
	2.5	2.8	-	V

4.4 数字接口特性

4.4

1.8V

V _{IH}		1.17	-	-
V _{IL}		-	-	0.63
V _{OH}		1.35	-	-
V _{OL}		-	-	0.45

4.5 SIM_VDD特性

4.5 SIM_VDD

V _o		-	3	-
		-	1.8	-
I _o		-	-	55

4.6 PWRKEY特性

4.6 PWRKEY

PWRKEY		1.4	-	-	V
		-	-	0.6	V
		2000			ms

4.7 VCOIN特性

4.7 VCOIN

VCOIN-IN	VCOIN	2	3	3.25	V
IRTC-IN	VCOIN	-		8	uA
VCOIN-OUT	VCOIN	-	3	-	V
IRTC-OUT	VCOIN	-		2	mA

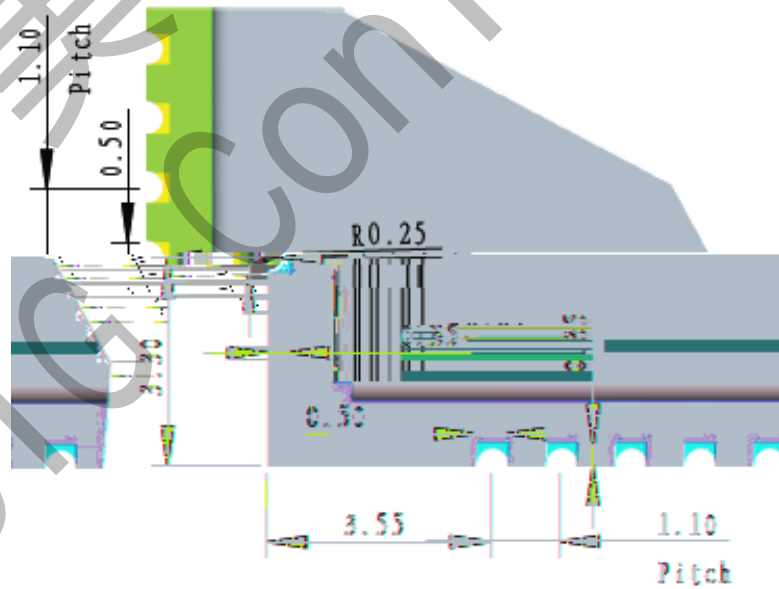
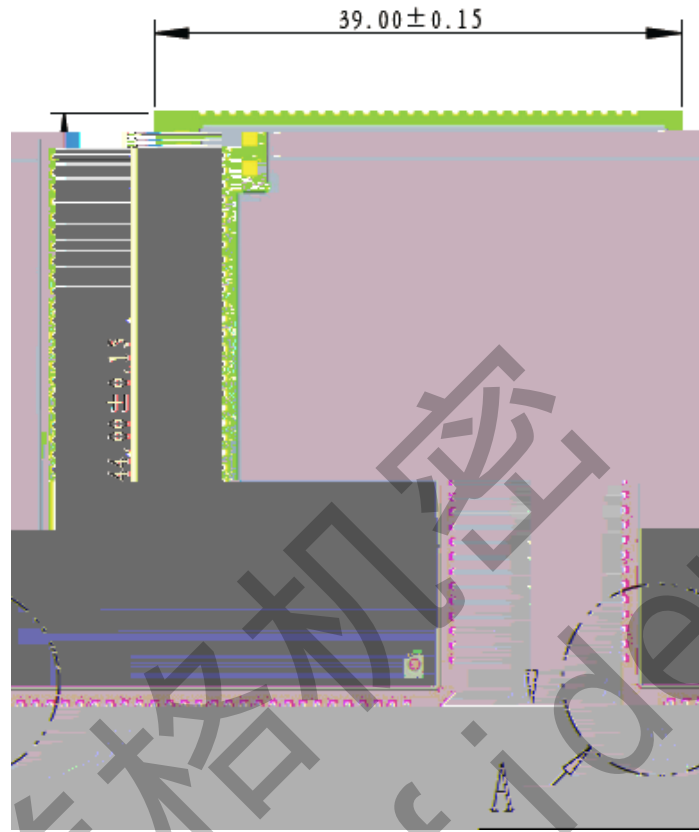
4.8 耗流 (VBAT=3.8V)

4.8

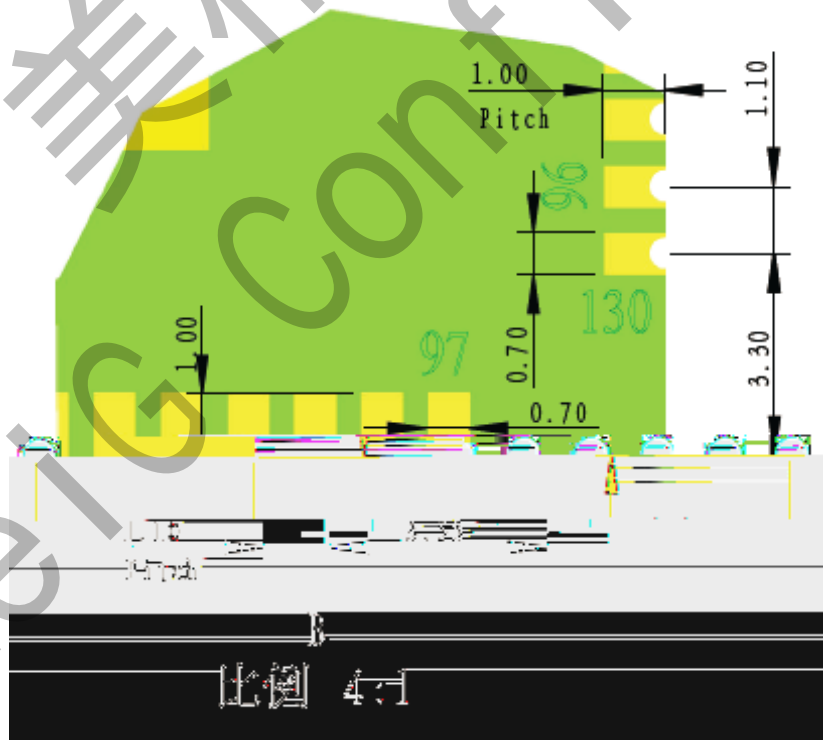
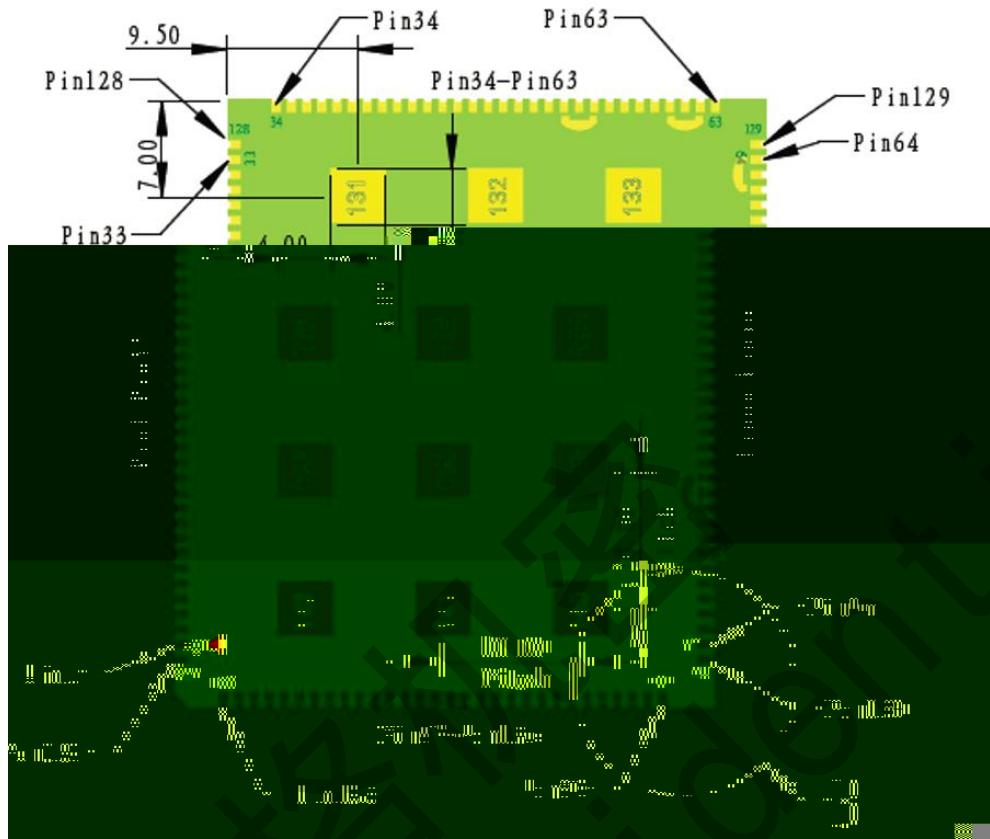
VBAT			3.4	3.8	4.2	V
Ivbat			-	-	29	uA
	GSM		-	-	2.5	mA
	WCDMA		-	-	2.4	mA

			TD-S	-	-	3.0	mA
			CDMA	-	-	3.0	mA

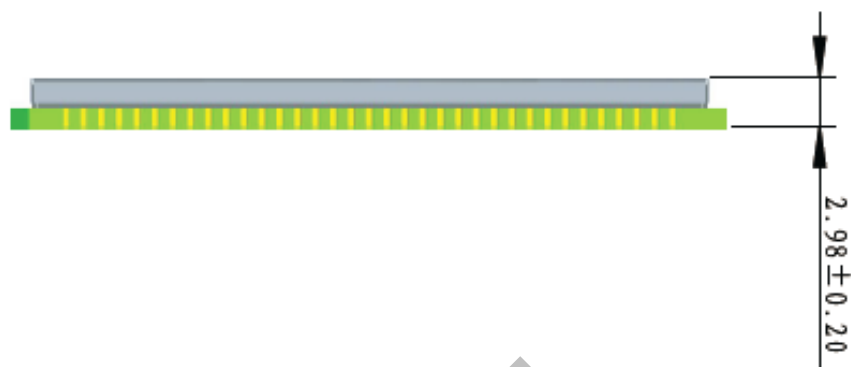
TOP



A
比例 4:1



比例 4:1



美格机密
Meig Confidential

