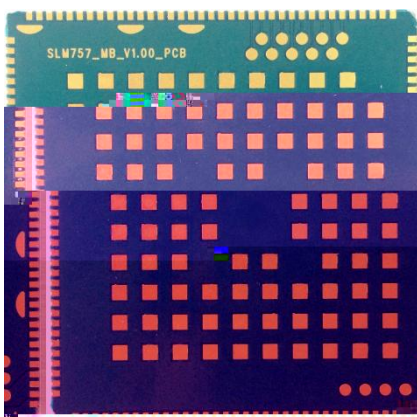


# SLM757-Q

# \_V1.00



	<b>SLM757-Q</b>
	<b>V1.00</b>
	<b>2016 10</b>



	TD-LTE	Cat4 TD-LTE 117/30Mbps	
	FDD-LTE	Cat4 FDD-LTE 150/50Mbps	
	DC-HSPA+	42/11.2Mbps	
	TD-HSPA	2.8/2.3Mbps	
	EVDO Rev.A	3.1/1.8Mbps	
	EDGE	Class12, 236.8kbps/236.8kbps	
	GPRS	Class12, 85.6kbps/85.6kbps	
SIM	DSDA 3.0/1.8V SIM LW/G+G with CSFB to W/G L/TDS/G+G with CSFB to TDS/G L/EVDO/CDMA1x+CDMA1x		
Display	Matrix: HD 1280*800 60fps; FULL HD: 1920*1200 45fps		
	LCM Size: User defined		
	Interface: MIPI DSI 4-lane		
Camera	Interface: main: MIPI CSI 4-lane; front: MIPI CSI 4-lane		
	Pixel: Max. 8Mp/ 16Mp		
	Video decode	1080p 30 fps: H264/ MP4/ WMV9/ VC1/ DivX/ VP8 HEVC (H.265) 720p 30fps in SW	
	Video encode	1080p 30 fps: H264/ H263/ MP4/ VP8	
	home + -		
	TP		
Reset			
	VBAT	3pin 3.4V 4.2V 3.8V	
	SDIO *1	TF Card 32GB	
	USB	OTG	
		USB_BOOT	USB
	BLSP ports	6 ports(BLSP2-7), 4-bits each, multiplexed serial interface functions	
	UART*3	BLSP2,BLSP5,BLSP6 support UART up to 4 Mbps	
	I2C	BLSP2-6 support I2C, These BLSPs use bits [1:0] for I2C	
	SPI(master only)	SPI is support by each BLSP	
	ADC*2		
		1.5A	
GPIO	53 GPIO, BLSP	GPIO	
VCOIN			

	PIN	LTE LTE GPS 2.4G WiFi-
	Audio	1 MIC 1 MIC 1 0.8W D 1 1

### 3.

SLM757-QE	TDD-LTE: B38/40/41 FDD-LTE: B1/3/5/7/8/20 WCDMA: B1/B5/B8 GSM: B5/3/8
SLM757-QA	FDD-LTE B2/4/5/12/13/17 WCDMA B2/4/5/8

## 4.SLM757

SLM757 模块 238pin 定义: **ND**

PIN#	SLM757 Pin name	Pad characteristics	Functional description
	GND	GND	GND
	VBUS	PI,PO	USB Voltage

30	GPIO29_CAM_I2C_SDA0	B-PD:nppukp	Configurable I/O,Dedicated camera I2C0 SDA
31	GPIO30_CAM_I2C_SCL0	B-PD:nppukp	Configurable I/O,Dedicated camera I2C0 SCL
32	GPIO62_CAM_DVDD_EN	B-PD:nppukp	Configurable I/O,LDO EN for CAM DVDD
33	GND	GND	GND
34	VREG_L11_2P95	PO	PMIC output 2.95V for SD-card power
35	VREG_L12_PX2_2P95	PO	PMIC output 2.95V for SDC2 signal
36	GPIO67_SDCARD_DET_N	B-PD:nppukp	Configurable I/O,SD card detection
37	GND	GND	GND
38	SDC2_SDCARD_CMD	BH-NP:pdpukp	Secure digital controller 2 command
39	SDC2_SDCARD_CLK	BH-NP:pdpukp	Secure digital controller 2 clock
40	SDC2_SDCARD_D0	BH-NP:pdpukp	Secure digital controller 2 data bit 0
41	SDC2_SDCARD_D1	BH-NP:pdpukp	Secure digital controller 2 data bit 1
42	SDC2_SDCARD_D2	BH-NP:pdpukp	Secure digital controller 2 data bit 2
43	SDC2_SDCARD_D3	BH-NP:pdpukp	Secure digital controller 2 data bit 3
44	GND	GND	GND
45	MIPI_CSI0_LANE1_N	AI	MIPI camera serial interface 0 lane1-
46	MIPI_CSI0_LANE1_P	AI	MIPI camera serial interface 0 lane1+
47	MIPI_CSI0_CLK_N	AI	MIPI camera serial interface 0 clock-
48	MIPI_CSI0_CLK_P	AI	MIPI camera serial interface 0 clock+
49	MIPI_CSI0_LANE2_N	AI	MIPI camera serial interface 0 lane2-
50	MIPI_CSI0_LANE2_P	AI	MIPI camera serial interface 0 lane2+
51	MIPI_CSI0_LANE0_N	AI	MIPI camera serial interface 0 lane0-
52	MIPI_CSI0_LANE0_P	AI	MIPI camera serial interface 0 lane0+
53	MIPI_CSI0_LANE3_N	AI	MIPI camera serial interface 0 lane3-
54	MIPI_CSI0_LANE3_P	AI	MIPI camera serial interface 0 lane3+
55	GND	GND	GND
56	MIPI_CSI1_LANE0_N	AI	MIPI camera serial interface 1 lane0-
57	MIPI_CSI1_LANE0_P	AI	MIPI camera serial interface 1 lane0+
58	MIPI_CSI1_CLK_N	AI	MIPI camera serial interface 1 clock-

66	MIPI_DSI0_CLK_P	AO	MIPI display serial interface 0 clock+
67	MIPI_DSI0_LANE1_N	AO	MIPI display serial interface 0 lane1-
68	MIPI_DSI0_LANE1_P	AO	MIPI display serial interface 0 lane1+
69	MIPI_DSI0_LANE3_N	AO	MIPI display serial interface 0 lane3-
70	MIPI_DSI0_LANE3_P	AO	MIPI display serial interface 0 lane3+
71	MIPI_DSI0_LANE2_N	AO	MIPI display serial interface 0 lane2-
72	MIPI_DSI0_LANE2_P	AO	MIPI display serial interface 0 lane2+
73	GND	GND	GND
74	RF_WIFI/BT	AI	RF signal for WIFI/BT
75	GND	GND	GND
76	GPIO5_UART0_RX	B-PD:nppukp	Configurable I/O,UART0 RX
77	GPIO4_UART0_TX	B-PD:nppukp	Configurable I/O,UART0 TX
78	GND	GND	GND
79	GPIO65_TP_INT_N	B-PD:nppukp	Configurable I/O,TP INT
80	GPIO64_TP_RST_N	B-PD:nppukp	Configurable I/O,TP RESET
81	GPIO11_TP_I2C3_SCL	B-PD:nppukp	Configurable I/O,TP I2C SCL
82	GPIO10_TP_I2C3_SDA	B-PD:nppukp	Configurable I/O,TP I2C SDA
83	GND	GND	GND
84	RF_5G	AI	RF signal for WIFI 5G
85	GND	GND	

102	UIM1_RESET	B-PD:nppukp	Configurable I/O,UIM1 reset
103	UIM1_CLK	B-PD:nppukp	Configurable I/O,UIM1 clock
104	UIM1_DATA	B-PD:nppukp	Configurable I/O,UIM1 data
105	VREG_L14_UIM1	PO	PMIC output for UIM1

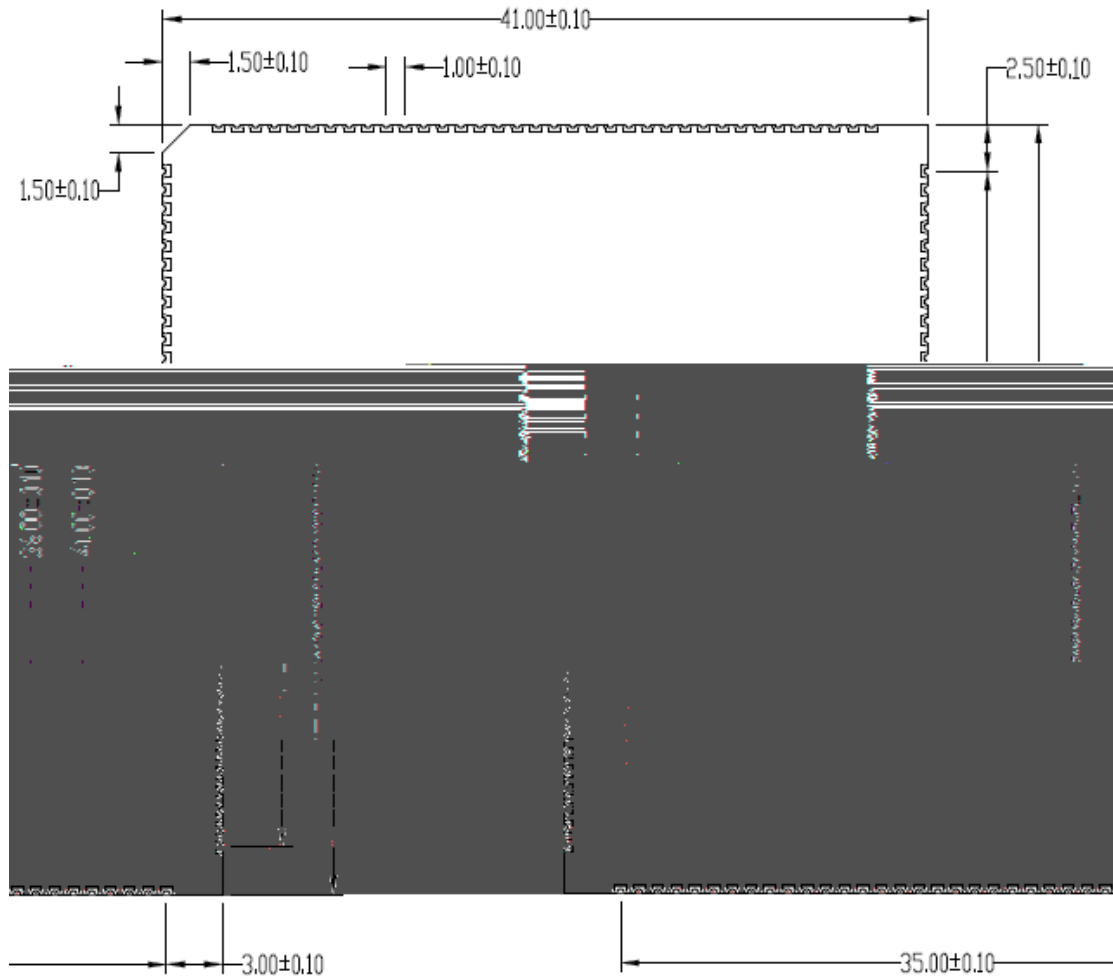
138	USB_ID	AI	USB ID
139	USB_DM	AI,AO	USB data minus
140	USB_DP	AI,AO	USB data plus
141	GND	GND	GND
142	GND	GND	GND
143	VBAT	PI,PO	Battery
144	VBAT	PI,PO	Battery
145	VBAT	PI,PO	Battery
146	GND	GND	GND
147	GND	GND	GND
148	GND	GND	GND
149	LCD_CABC	DI	PWM signal from display controller
150	GPIO8	B-PD:nppukp	Configurable I/O
151	GPIO9	B-PD:nppukp	Configurable I/O
152	GPIO92	B-PD:nppukp	Configurable I/O
153	GPIO50_FLASH_FRONT_EN	B-PD:nppukp	Configurable I/O
154	GND	GND	GND
155	GND	GND	GND
156	GPIO38_DCAM_RST	B-PD:nppukp	Configurable I/O,Depth camera reset
157	GPIO27_DCAM_MCLK	B-PD:nppukp	Configurable I/O,Depth camera MCLK
158	MIPI_CSI1_LANE2_N	AI	MIPI camera serial interface 1 lane2-
159	MIPI_CSI1_LANE2_P	AI	MIPI camera serial interface 1 lane2+
160	GND	GND	GND
161	GND	GND	GND
162	GND	GND	GND
163	GPIO33_FLASH_EN	B-PD:nppukp	Configurable I/O
164	MIPI_DSI1_LANE0_P	AO	MIPI display serial interface 1 lane0+
165	MIPI_DSI1_LANE2_N	AO	MIPI display serial interface 1 lane2-
166	MIPI_DSI1_LANE2_P	AO	MIPI display serial interface 1 lane2+
167	MIPI_DSI1_LANE3_N	AO	MIPI display serial interface 1 lane3-
168	MIPI_DSI1_LANE3_P	AO	MIPI display serial interface 1 lane3+
169	FM_ANT	AI	Signal for FM ANT
170	GND	GND	GND
171	GND	GND	GND
172	GPIO13	B-PD:nppukp	Configurable I/O
173	GPIO93	B-PD:nppukp	Configurable I/O

174	GND	GND	GND
175	GND	GND	GND
176	GPIO130	B-PD:nppukp	Configurable I/O
177	GND	GND	GND
178	GND	GND	GND
179	GPIO44_MAG_RST_N	B-PD:nppukp	Configurable I/O,Magnetometer interrupt
180	GPIO94	B-PD:nppukp	Configurable I/O
181	GPIO95	B-PD:nppukp	Configurable I/O
182	GPIO123	B-PD:nppukp	Configurable I/O
183	SMB_PARALLEL_CHG_EN	DO	Connect SMB_EN for parallel charging(PMI8952)
184	GPIO125	B-PD:nppukp	Configurable I/O
185	GPIO126	B-PD:nppukp	Configurable I/O
186	GPIO129	B-PD:nppukp	Configurable I/O
187	GPIO45	B-PD:nppukp	Configurable I/O
188	GPIO31_CAM_I2C_SDA1	B-PD:nppukp	Configurable I/O,Dedicated camera I2C1 SDA
189	GPIO32_CAM_I2C_SCL1	B-PD:nppukp	Configurable I/O,Dedicated camera I2C1 SCL
190	GND	GND	GND
191	MIPI_CSI1_LANE3_P	AI	MIPI camera serial interface 1 lane3+
192	MIPI_CSI1_LANE3_N	AI	MIPI camera serial interface 1 lane3-
193	GND	GND	GND
194	GND	GND	GND
195	GND	GND	GND
196	GPIO25_LCD_TE1	B-PD:nppukp	Configurable I/O,secondary LCD TE
197	MIPI_DSI1_LANE0_N	AO	MIPI display serial interface 1 lane0-
198	MIPI_DSI1_CLK_P	AO	MIPI display serial interface 1 clock+
199	MIPI_DSI1_CLK_N	AO	MIPI display serial interface 1 clock-
200	GPIO19_NFC_I2C5_SCL	B-PD:nppukp	Configurable I/O,NFC I2C SCL
201	GPIO18_NFC_I2C5_SDA	B-PD:nppukp	Configurable I/O,NFC I2C SDA
202	GPIO12	B-PD:nppukp	Configurable I/O
203	GPIO90_DMIC0_DATA	B-PD:nppukp	Configurable I/O,Digital MIC0 data
204	GPIO89_DMIC0_CLK	B-PD:nppukp	Configurable I/O,Digital MIC0 clock
205	GPIO99	B-PD:nppukp	Configurable I/O
206	GPIO98	B-PD:nppukp	Configurable I/O
207	GPIO97	B-PD:nppukp	Configurable I/O
208	GPIO96	B-PD:nppukp	Configurable I/O

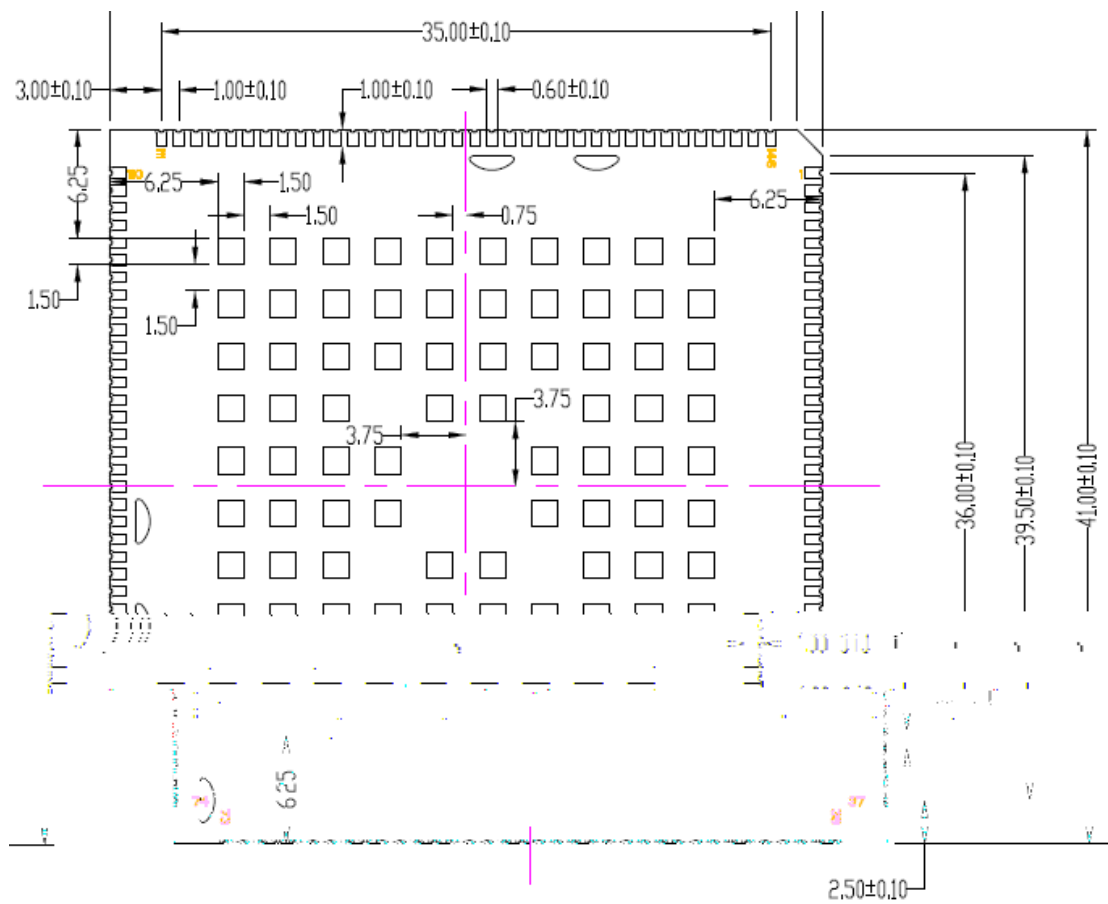
209	GND	GND	GND
210	GND	GND	GND
211	GND	GND	GND
212	GND	GND	GND
213	GND	GND	GND
214	GND	GND	GND
215	GPIO68_DCAM_PWDN	B-PD:nppukp	Configurable I/O
216	GPIO41	B-PD:nppukp	Configurable I/O,Accelerometer interrupt2
217	GPIO42_G_INT1_N	B-PD:nppukp	Configurable I/O,Accelerometer interrupt1
218	GPIO48	B-PD:nppukp	Configurable I/O
219	GPIO46	B-PD:nppukp	Configurable I/O
220	GPIO124	B-PD:nppukp	Configurable I/O
221	MIPI_DSI1_LANE1_P	AO	MIPI display serial interface 1 lane1+
222	MIPI_DSI1_LANE1_N	AO	MIPI display serial interface 1 lane1-
223	GPIO17_UART1_RX	B-PD:nppukp	Configurable I/O,UART1 RX
224	GPIO16_UART1_TX	B-PD:nppukp	Configurable I/O,UART1 TX
225	GPIO88_SPI7_CLK	B-PD:nppukp	Configurable I/O,SPI CLK
226	GPIO87_SPI7_CS_N	B-PD:nppukp	Configurable I/O,SPI CS
227	GPIO86_SPI7_MISO	B-PD:nppukp	Configurable I/O,SPI MISO
228	GPIO85_SPI7_MOSI	B-PD:nppukp	Configurable I/O,SPI MOSI
229	GPIO43_PS_INT_N	B-PD:nppukp	Configurable I/O,ALSP interrupt
230	GND	GND	GND
231	GND	GND	GND
232	GND	GND	GND
233	FORCE_USB_BOOT	DI	pullup with VREG_L5 to forced USB boot
234	GPIO47	B-PD:nppukp	Configurable I/O
235	GPIO23_I2C6_SCL	B-PD:nppukp	Configurable I/O,I2C SCL or UART2 RTS
236	GPIO22_I2C6_SDA	B-PD:nppukp	Configurable I/O,I2C SDA or UART2 CTS
237	GPIO21_UART2_RX	B-PD:nppukp	Configurable I/O,UART2 RX
238	GPIO20_UART2_TX	B-PD:nppukp	Configurable I/O,UART2 TX

# 5. 2D

2D



2D



# 6.PIN MAP

